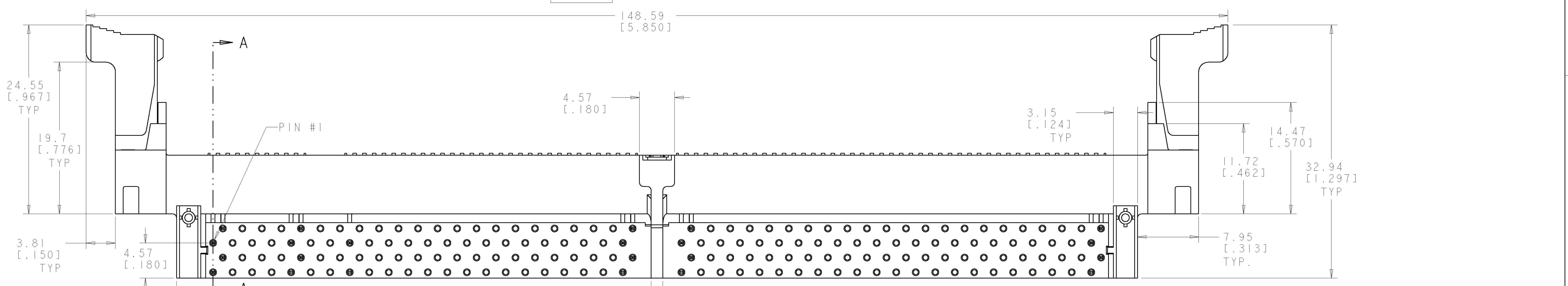
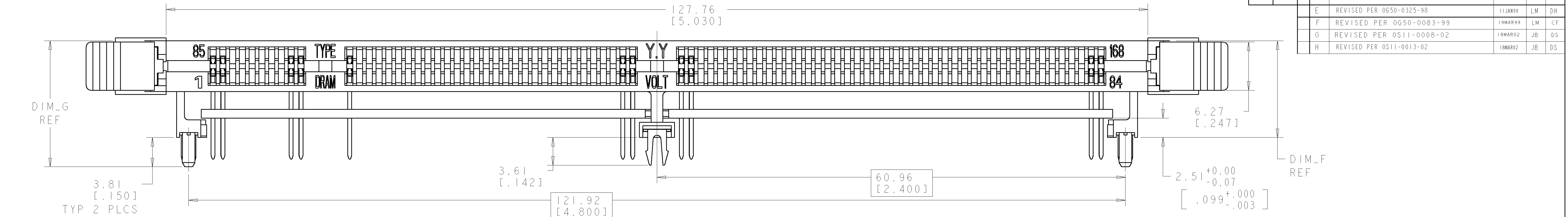
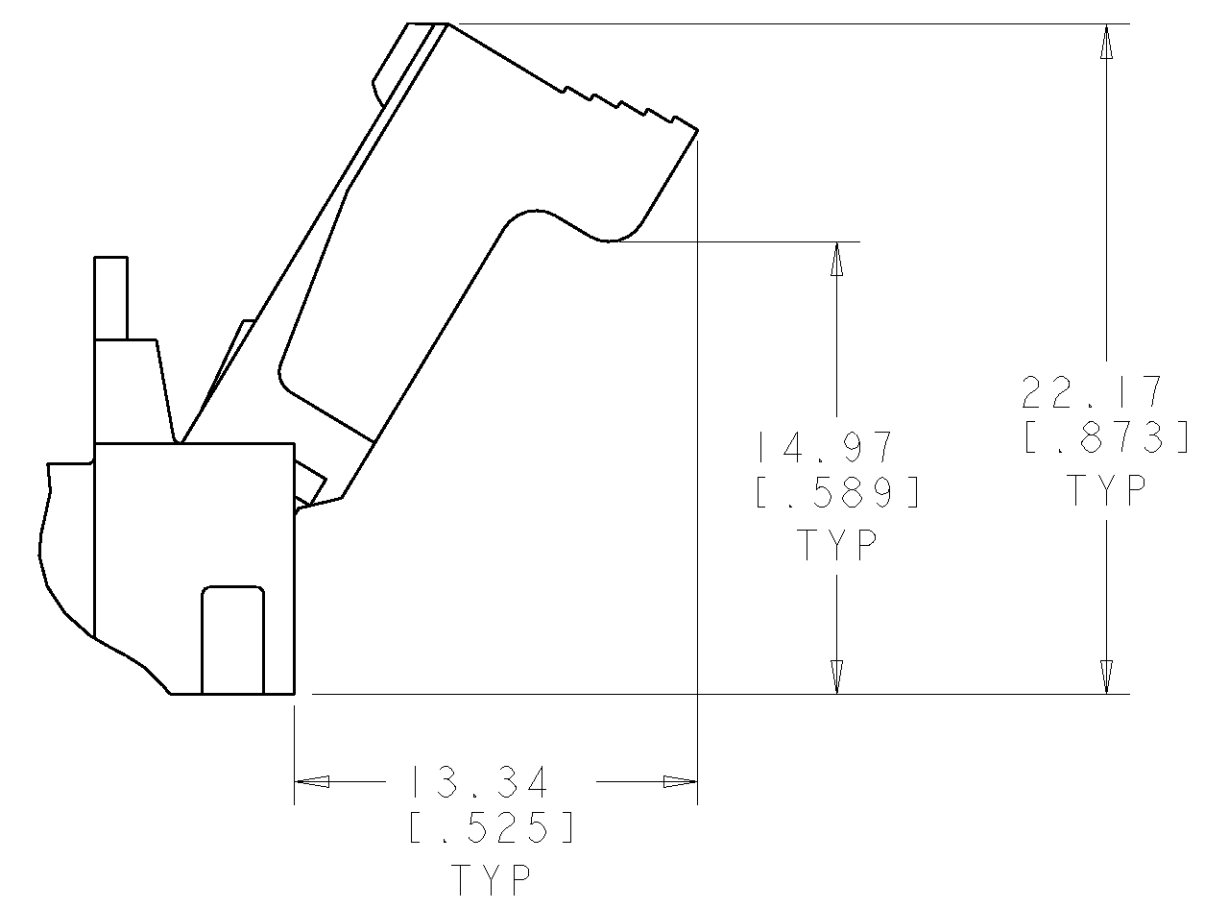


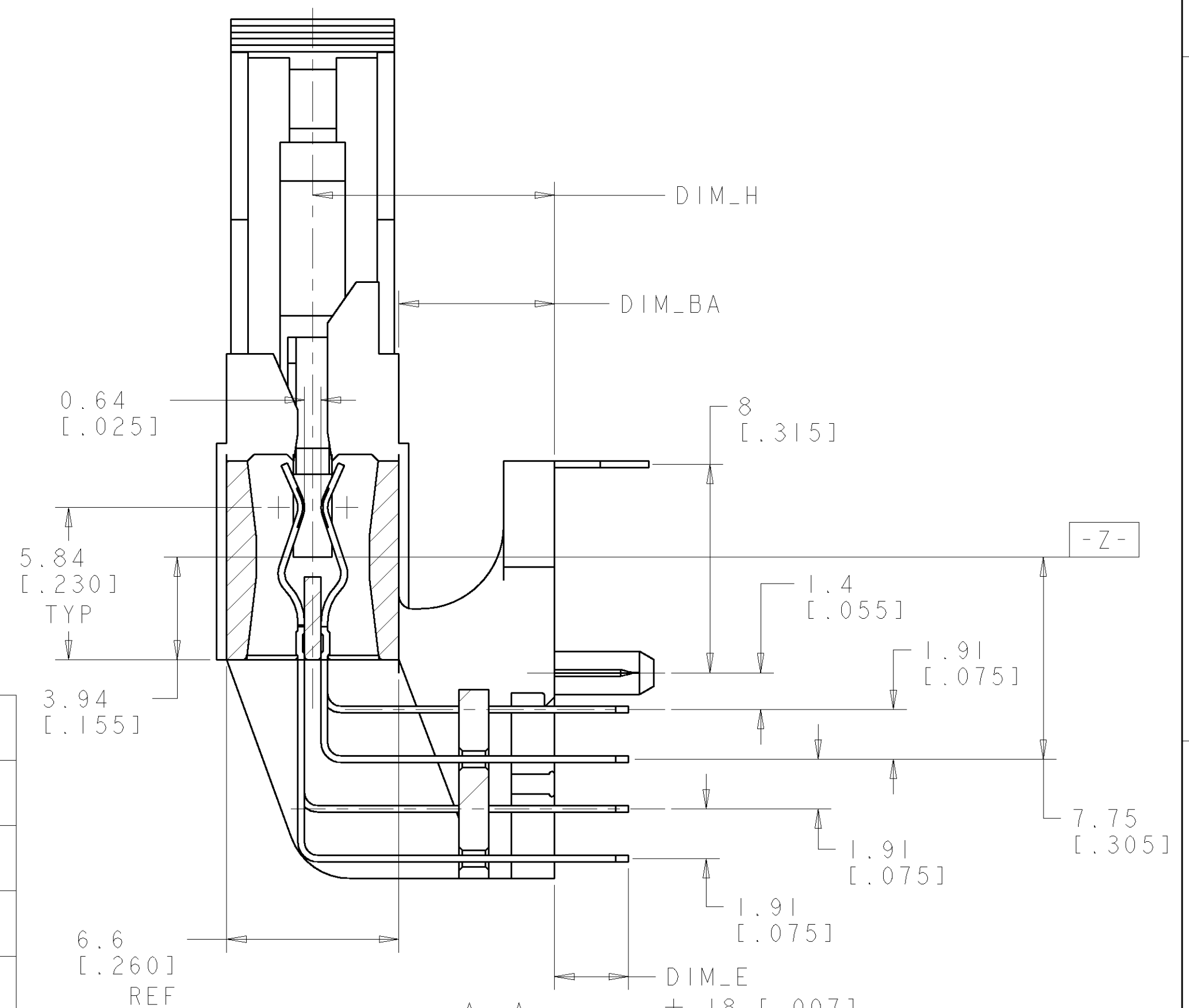
REV	DATE	BY	CHK	APPV
E	11JAN99	LM	DH	
F	18MAR99	JB	CF	
G	18MAR02	JB	DS	
H	18MAR02	JB	DS	



- MATERIAL:
HOUSING: HIGH TEMPERATURE NYLON
CONTACT: PHOSPHOR BRONZE
- FINISH:
CONTACT AREA:
0.00076 [.000030] MIN THICK GOLD OVER
0.001270 [.000050] MIN THICK NICKEL.
OR
0.000076 [.000003] MIN THICK GOLD FLASH OVER
0.000510 [.000020] MIN THICK PALLADIUM NICKEL OVER
0.001270 [.000050] MIN THICK NICKEL.
SOLDERTAIL:
0.00381 [.000150] MIN THICK TIN LEAD OVER
0.00064 [.000025] MIN THICK NICKEL.
- FOR OPTIMUM PERFORMANCE, PADS SHOULD BE SMOOTH AND FLAT PADS TO BE PLATED WITH:
0.00102 [.000040] MIN THICK GOLD OVER
0.00127 [.000050] MIN THICK NICKEL.
- 390171-6 IS SAME CONNECTOR AS 1-390171-0 EXCEPT WITH LUBRICATED CONTACTS.



EXTRACTOR SHOWN IN THE OPEN POSITION

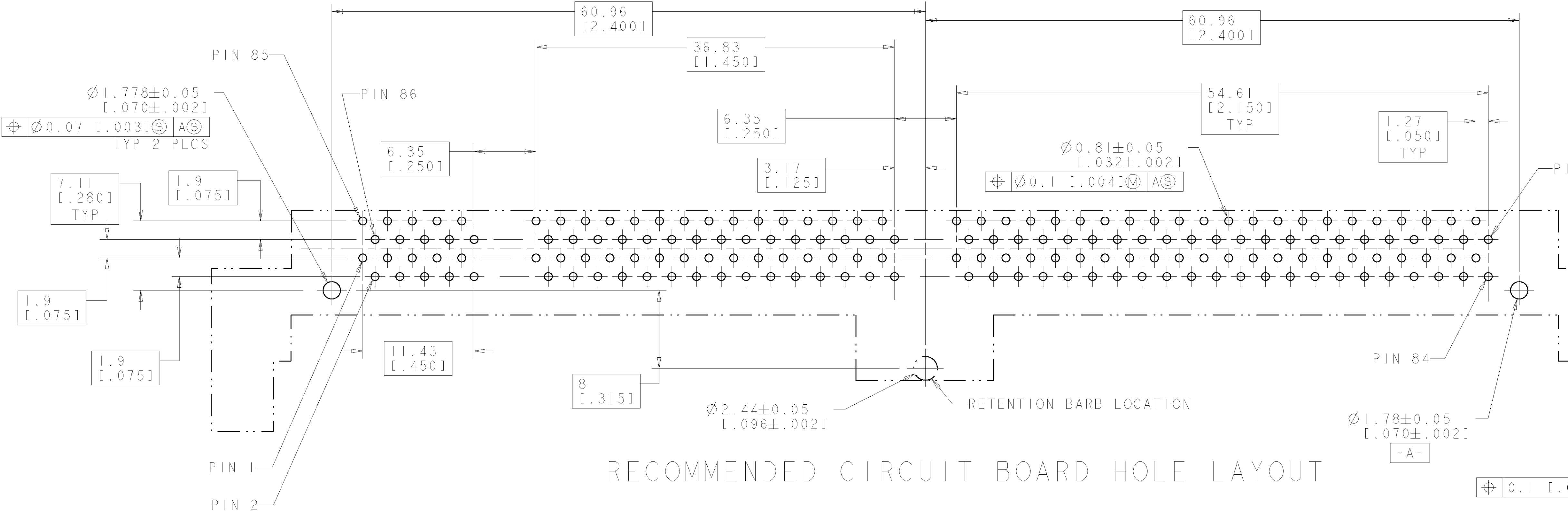


SECTION A-A
SCALE 6:1

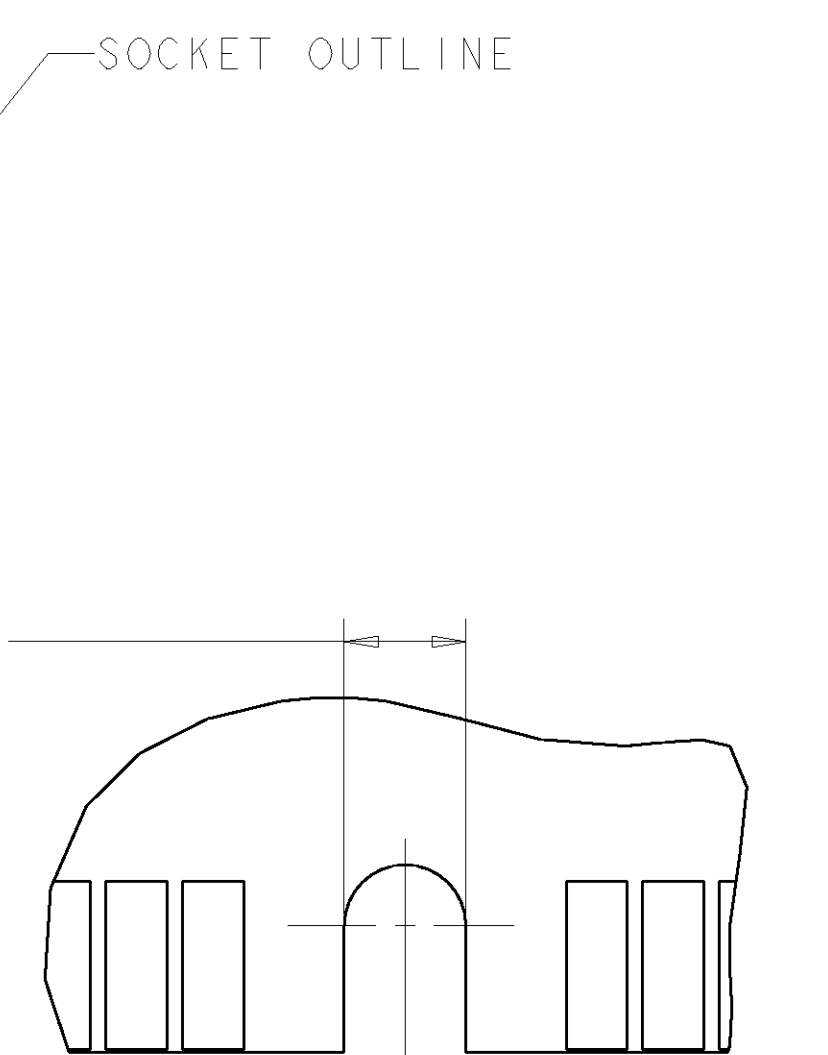
NB	3.3	10.92 [.430]	18.03 [.710]	14.22 [.560]	3.68 [.145]	7.62 [.300]	DETAIL C	DETAIL A	SYNC NON-BUFFERED DRAM, 3.3 VOLT	2-390171-6
NB	3.3	10.92 [.430]	18.03 [.710]	14.22 [.560]	3.18 [.125]	7.62 [.300]	DETAIL C	DETAIL A	SYNC NON-BUFFERED DRAM, 3.3 VOLT	1-390171-6
SYNC	3.3	10.92 [.430]	18.03 [.710]	14.22 [.560]	3.18 [.125]	7.62 [.300]	DETAIL B	DETAIL A	SYNC DRAM, 3.3 VOLT	1-390171-5
STD	3.3	10.92 [.430]	18.03 [.710]	14.22 [.560]	3.18 [.125]	7.62 [.300]	DETAIL A	DETAIL A	STD DRAM, 3.3 VOLT	1-390171-4
NB	3.3	9.27 [.365]	16.38 [.645]	12.57 [.495]	2.83 [.112]	5.97 [.235]	DETAIL C	DETAIL A	SYNC NON-BUFFERED DRAM, 3.3 VOLT	1-390171-0
NB	3.3	9.27 [.365]	16.38 [.645]	12.57 [.495]	2.83 [.112]	5.97 [.235]	DETAIL C	DETAIL A	SYNC NON-BUFFERED DRAM, 3.3 VOLT	390171-6 ⁴
SYNC	3.3	9.27 [.365]	16.38 [.645]	12.57 [.495]	2.83 [.112]	5.97 [.235]	DETAIL B	DETAIL A	SYNC DRAM, 3.3 VOLT	390171-5
STD	3.3	9.27 [.365]	16.38 [.645]	12.57 [.495]	2.83 [.112]	5.97 [.235]	DETAIL A	DETAIL A	STD DRAM, 3.3 VOLT	390171-4
TYPE	Y.Y	DIM_H	DIM_G	DIM_F	DIM_E ±.18 [.007]	DIM_BA	KEY #1	KEY #2	PART DESCRIPTION	PART NUMBER

<small>THIS DRAWING IS A CONTROLLED DOCUMENT FOR AMP INCORPORATED. ALL DIMENSIONS ARE IN MILLIMETERS UNLESS OTHERWISE SPECIFIED. ORGANIZATION SHOULD BE CONTACTED FOR THE LATEST REVISIONS.</small>		DWN: J. BURWELL 29JUNE98 CHK: D. HAMMER 29JUNE98 APPV:	AMP AMP Incorporated Harrisburg, PA 17105-3608
DIMENSIONS: mm(INCHES)	TOLERANCES UNLESS OTHERWISE SPECIFIED: 0 PLC ± 1 PLC ± 2 PLC ± 3 PLC ±.13 [.005] 4 PLC ± ANGLES ±1°	PRODUCT SPEC APPLICATION SPEC WEIGHT CUSTOMER DRAWING	NAME: SOCKET, DIMM., DRO, RT ANGLE, 168 POSITION, 17.78mm LOCKING EXTRACTORS. SIZE: A1 CAGE CODE: 00779 DRAWING NO: C=390171 SCALE: 4:1 SHEET 1 OF 2 REV H

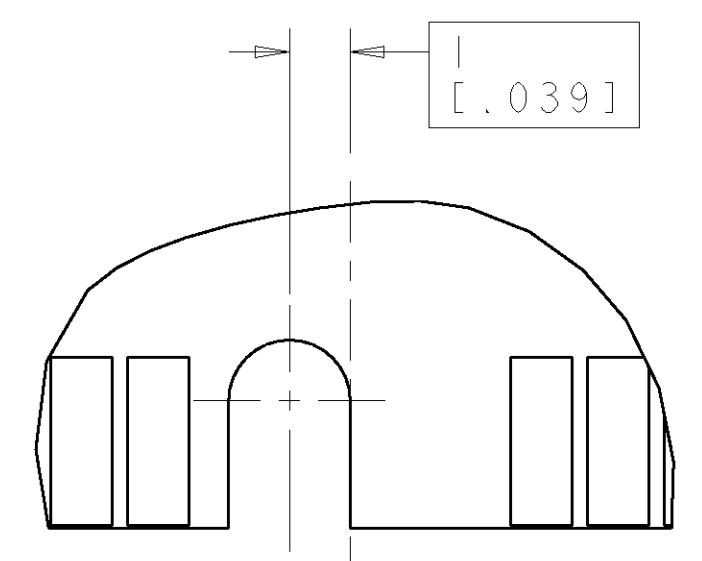
LOC	DIST	REV	DATE	APPD
GP	0			



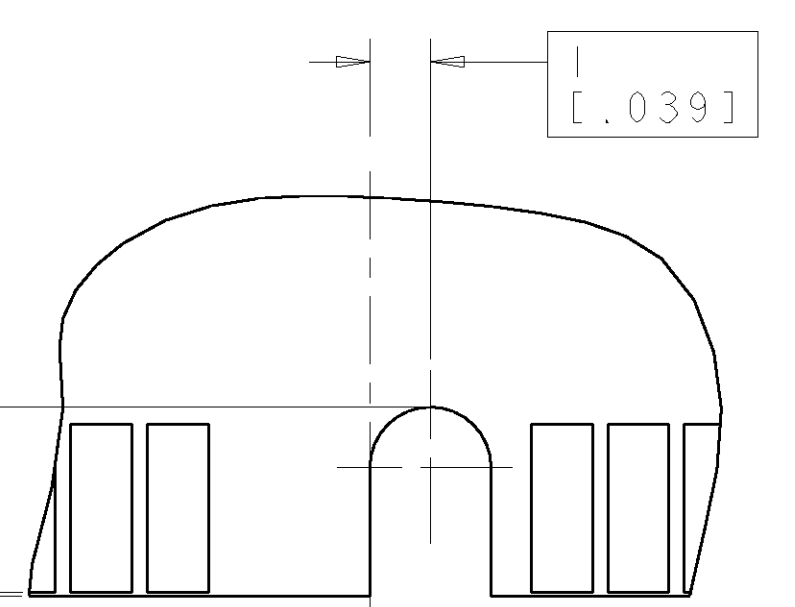
RECOMMENDED CIRCUIT BOARD HOLE LAYOUT



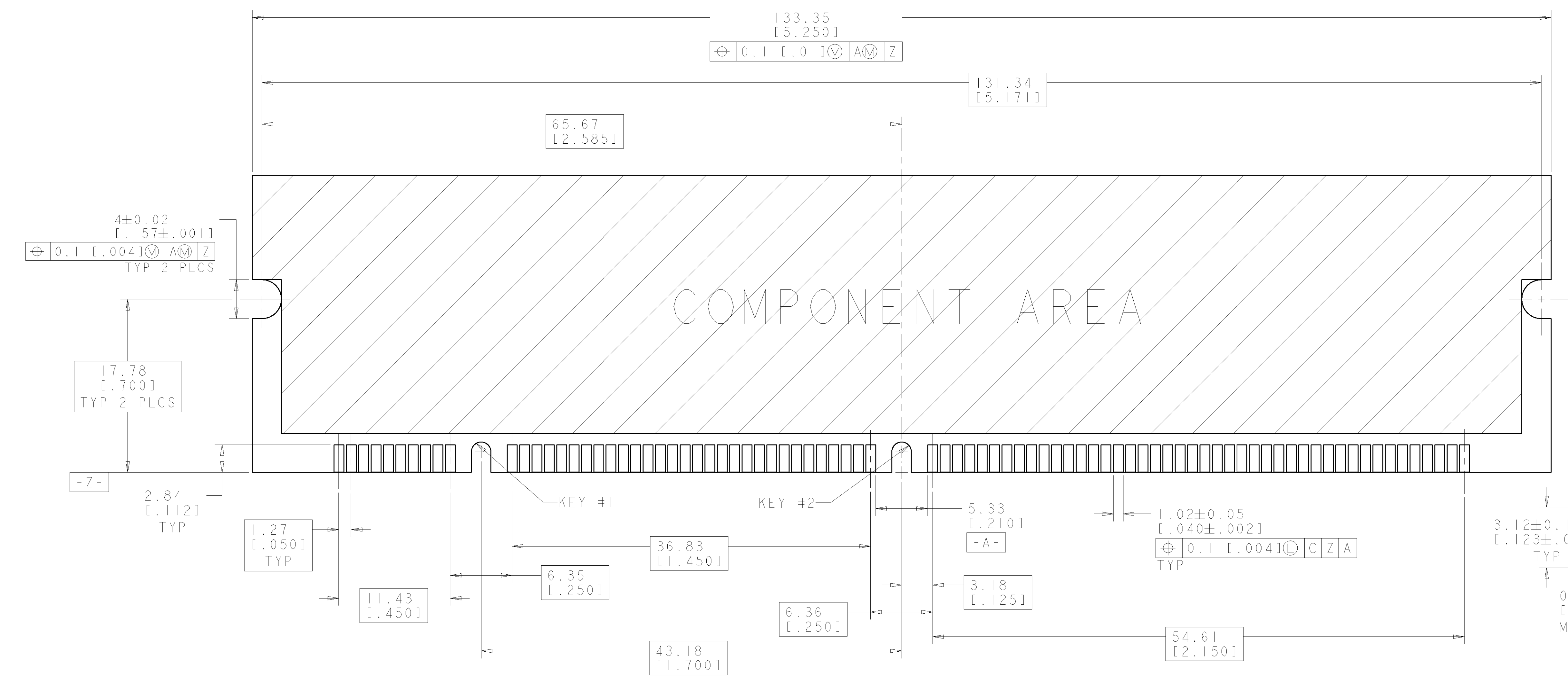
DETAIL A
SCALE 8:1



DETAIL B
SCALE 8:1



DETAIL C
SCALE 8:1



RECOMMENDED MODULE LAYOUT
SEE JEDEC SPEC. MO-161 FOR COMPLETE MODULE DETAILS
1.27±0.10 [0.050±0.004] THICK ACROSS CONTACT PADS

<small>THIS DRAWING IS A CONTROLLED DOCUMENT FOR AMP INCORPORATED. ALL DIMENSIONS ARE TO BE CONTROLLED ON RECEIVING. ORGANIZATION SHOULD BE CONTACTED FOR THE LATEST REVISION.</small>		DWN: J. BURWELL 29 JUNE 98 ENW: D. HAMMER 29 JUNE 98	
DIMENSIONS: mm [INCHES]		TOLERANCES UNLESS OTHERWISE SPECIFIED:	
0 PLC ± 1 PLC ± 2 PLC ± 3 PLC ±0.13 [0.005] 4 PLC ± ANGLES ±1°		PRODUCT SPEC APPLICATION SPEC WEIGHT CUSTOMER DRAWING	
MATERIAL:		FINISH:	
NAME: SOCKET, DIMM., DRO, RT ANGLE, 168 POSITION, 17.78mm LOCKING EXTRACTORS.		SIZE: A1 CAGE CODE: 00779 DRAWING NO: C=390171	
SCALE: 1:1		SHEET 2 OF 2 REV H	